

HANDOUT 3

Excerpts* from
NPD CLOSURE PROJECT
**DRAFT GROUNDWATER FOLLOW-UP MONITORING
PLAN**

*Full plan is available on www.CNL.ca 64-509200-PLA-004 (Revision 0)

2019 April 24

Breakfast Briefing

Deep River Public Library

Figure 7-13 Overview of groundwater monitoring well locations

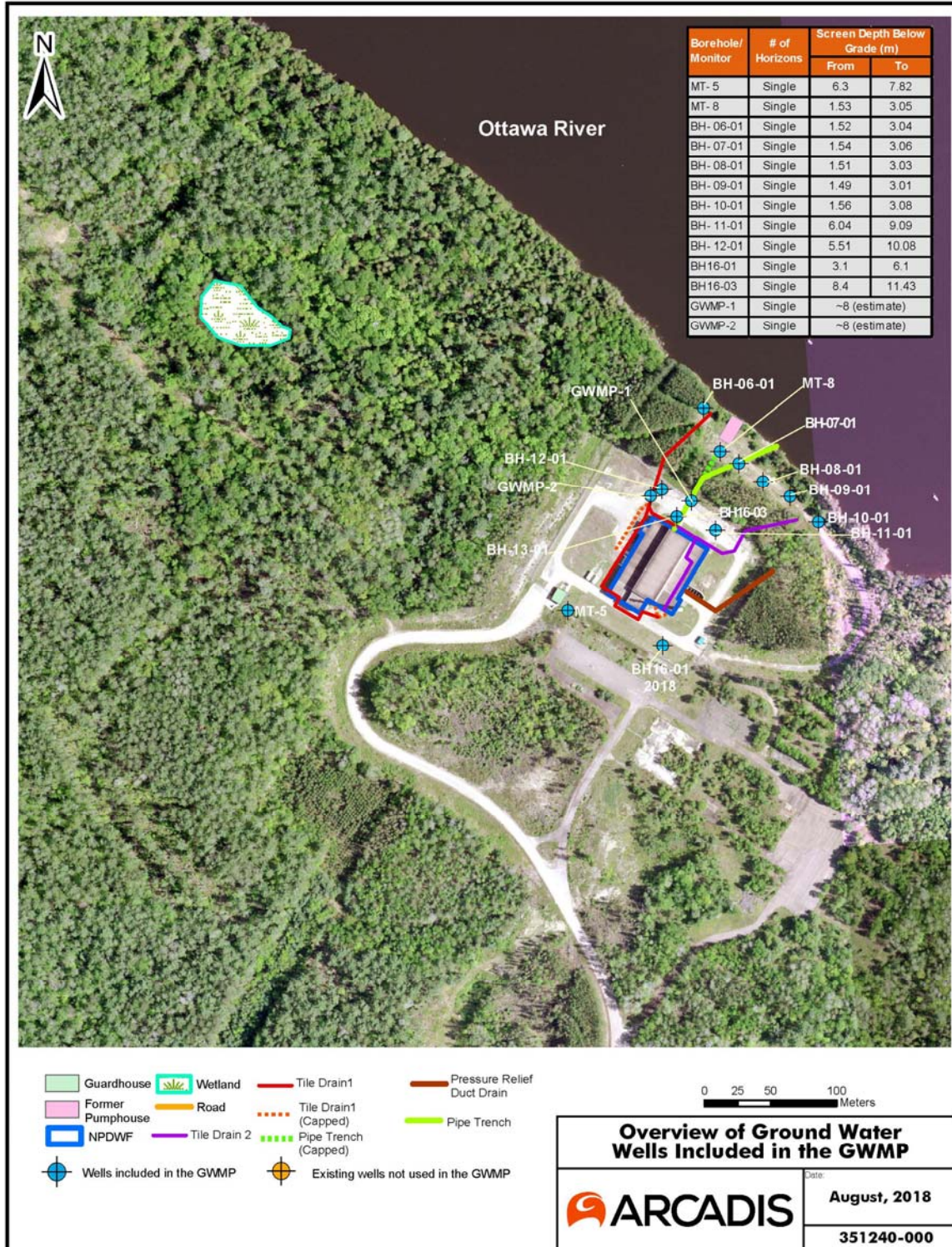


Table 7-23 Summary of groundwater monitoring during the Decommissioning Execution (DE) Phase

Sampling Location	Analysis Required	Monitoring Frequency	Analysis Lab
Reference Wells (MT-5); Existing Wells (MT-8, BH-06-01 to BH-12-01, BH-16-01, BH-16-03); and, Proposed New Wells (GWMP-1 and GWMP-2)	GPS Location, Groundwater Level	<u>Groundwater Quality (Obj. #1):</u> 4 campaigns (1 per quarter), over 1 year, at the completion of DE	Internal CNL
	Wellhead Parameters (Temperature, pH, Conductance)	<u>Groundwater Quality (Obj. #2):</u> 2 campaigns over 1 year (i.e. semi-annually) and, 1 one-time comprehensive campaign at the completion of DE	Internal CNL
	Radiological (Tritium, Gross Alpha, Gross Beta)		Internal CNL
	Anions		Internal CNL
	Alkalinity		Internal CNL
	Major Cations		Internal CNL
	Metals		Internal CNL
	PCBs (Total)		External Laboratory
	Petroleum Components (F1 - F4)		External Laboratory

Table 7-24 Summary of groundwater monitoring during the Institutional Controls (IC) Phase

Sampling Location	Analysis Required	Monitoring Frequency	Analysis Lab
Reference Wells (MT-5); Existing Wells (MT-8, BH-06-01 to BH-12-01, BH-16-01, BH-16-03); and, Proposed New Wells (GWMP-1 and GWMP-2)	GPS Location, Groundwater Level	<u>Groundwater Quality (Obj. #3):</u> During resaturation: semi-annually After resaturation: to be determined in future using the periodic review process.	Internal CNL
	Wellhead Parameters (Temperature, pH, Conductance)	<u>Groundwater Quality (Obj. #4):</u> 1 st year: Quarterly	Internal CNL
	Radiological (Tritium, Gross Alpha, Gross Beta)	2 nd year to completion of resaturation: Semi-annual	Internal CNL
	Anions	After resaturation: 1 one-time comprehensive campaign at the completion of resaturation	Internal CNL
	Alkalinity		Internal CNL
	Major Cations	<u>Performance Monitoring (Obj. #5):</u> (Tritium, Gross Beta/Gamma, pH, and Alkalinity)	Internal CNL
	Metals		Internal CNL
	PCBs (Total)	1 st year: Quarterly	External Laboratory
	Petroleum Components (F1 - F4)	2 nd year to completion of resaturation: Semi-annual After Resaturation: 1 st year: Periodic (Quarterly) for 1 year After resaturation: 2 nd year and beyond: Periodic (semi-annually).	External Laboratory

Acronyms

DOC – Dissolved Organic Carbon

GPS – Global Positioning System

PCB – Polychlorinated Biphenyl